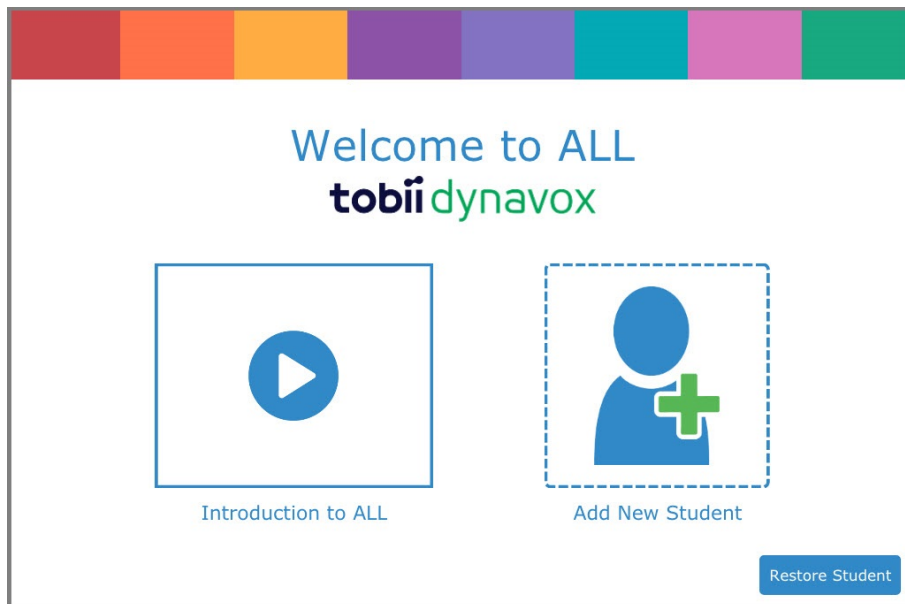


## Accessible Literacy Learning (ALL) Quick Start Guide

### Welcome to ALL

When you launch the ALL software for the first time, you will see the **Welcome to ALL** screen. Here, you can watch an introductory video, add a new student, and restore a student.



### Watch the Video

Get acquainted with the ALL software by watching the short introductory video. This video will give you an overview of the software and show you how to best use the software to help your students learn to read.

### Add a New Student

Every student using the ALL software must have their own profile. This allows each student to have an individualized curriculum, settings, and progress tracking.

### Support for Your Tobii Dynavox Device

#### Get Help Online

See the product-specific Support page for your Tobii Dynavox device. It contains up-to-date information about issues and tips & tricks related to the product. Find our Support pages online at: [www.TobiiDynavox.com](http://www.TobiiDynavox.com) or [www.myTobiiDynavox.com](http://www.myTobiiDynavox.com).

#### Contact Your Sales Representative or Reseller

For questions or problems with your product, contact your Tobii Dynavox sales representative or authorized reseller for assistance. They are most familiar with your personal setup and can best help you with tips and product training. For contact details, visit [www.TobiiDynavox.com/contact](http://www.TobiiDynavox.com/contact)

1. Select **Add a New Student**. The Add Student dialog will open.

Add Student

First Name

Last Name

Date of Birth  
5/31/11



Game Mode  Enabled

Image Preferences Photos

Access Method Simple Touch

Advanced Settings

OK Cancel

2. Enter the first and last name of the student.
3. Select the  calendar to set the student's date of birth.
4. Choose the birth month and year, then the day. Press **OK** to save.
5. If desired, select the  button to use a custom picture for the student. Choose an image saved on your device or take a picture if your device has a built-in camera.
6. Press **OK** to save your new student.

After adding your new student, you will see the Student Mode home screen for that student. From this screen, you can start an ALL session or open the Library to read a book.

## Restore a Student

If you have a student backup file saved locally or on your myTobiiDynavox account, you may restore the student and their data to your current device.

### Restore from myTobiiDynavox



You must be connected to the internet to restore from myTobiiDynavox.

1. Select **Restore Student**. The Restore Student dialog will open.
2. Select **myTobiiDynavox**.
3. You may be prompted to sign in with your myTobiiDynavox credentials if you are not already signed in.
4. Select the student backup file from the list, then select **OK**.

## Support for Your Tobii Dynavox Device

### Get Help Online

See the product-specific Support page for your Tobii Dynavox device. It contains up-to-date information about issues and tips & tricks related to the product. Find our Support pages online at: [www.TobiiDynavox.com](http://www.TobiiDynavox.com) or [www.myTobiiDynavox.com](http://www.myTobiiDynavox.com).

### Contact Your Sales Representative or Reseller

For questions or problems with your product, contact your Tobii Dynavox sales representative or authorized reseller for assistance. They are most familiar with your personal setup and can best help you with tips and product training. For contact details, visit [www.TobiiDynavox.com/contact](http://www.TobiiDynavox.com/contact)

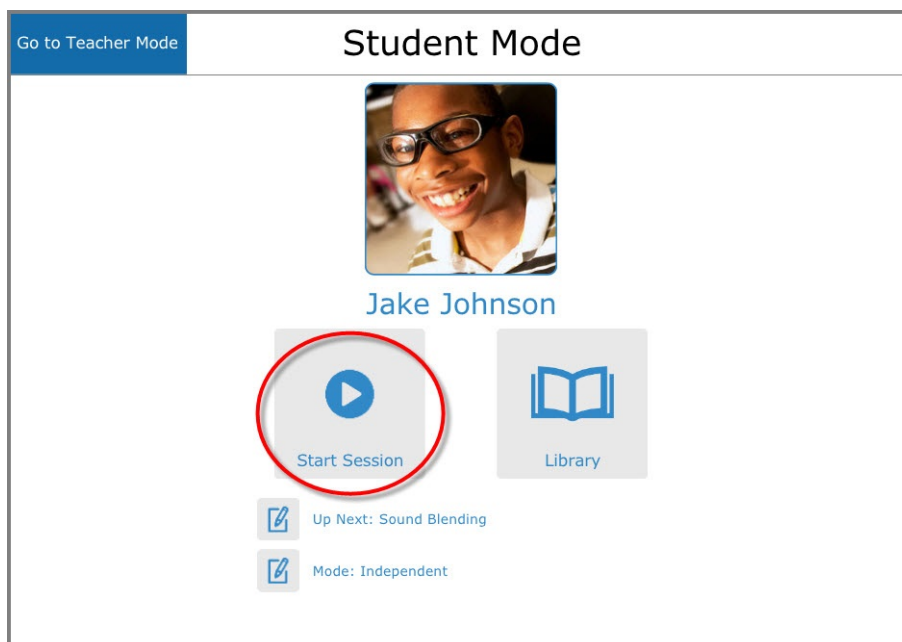
5. A Downloading Student progress popup will open. When the download is complete, the Select Student dialog will open.
6. Select the student you would like to be currently active, then press **OK**.

## Restore from a local file

1. Select **Restore Student**. The Restore Student dialog will open.
2. Select **Local File**.
3. Select the up arrow and folder(s) to navigate to the directory containing the backup file. Select the desired backup file *[filename].auf*
4. Select the green **Select** button. The Select Student dialog will open.
5. Select the student you would like to be currently active, then press **OK**.

## Start a Session

1. Select **Start Session**. The Session Screen will open.



## Support for Your Tobii Dynavox Device

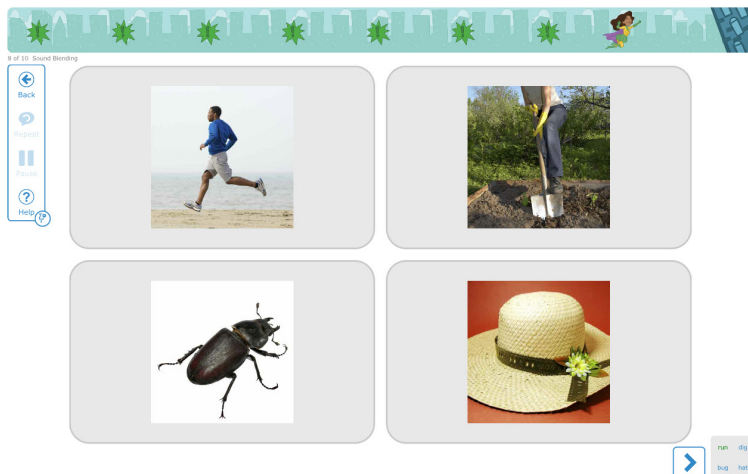
### Get Help Online

See the product-specific Support page for your Tobii Dynavox device. It contains up-to-date information about issues and tips & tricks related to the product. Find our Support pages online at: [www.TobiiDynavox.com](http://www.TobiiDynavox.com) or [www.myTobiiDynavox.com](http://www.myTobiiDynavox.com).

### Contact Your Sales Representative or Reseller

For questions or problems with your product, contact your Tobii Dynavox sales representative or authorized reseller for assistance. They are most familiar with your personal setup and can best help you with tips and product training. For contact details, visit [www.TobiiDynavox.com/contact](http://www.TobiiDynavox.com/contact)

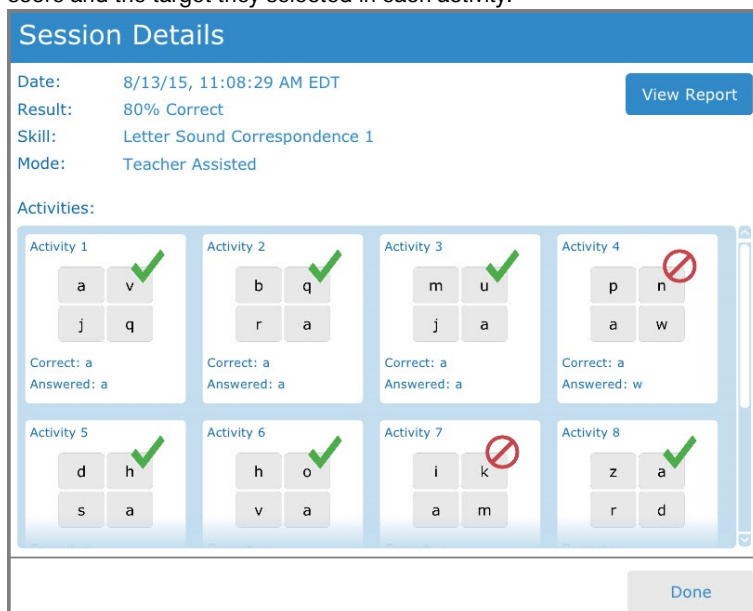
- The software will introduce the activity, prompt the student to select the target, and provide feedback based on their selection. Encourage the student to listen to the prompts, then select what they think is the correct target.



- Support the student through each activity screen until they have completed the session. At the end of the session, you will return to the Student Mode home screen.

## Check Student Progress

- From the Student Mode Home Screen, select **Go to Teacher Mode**.
- Select **History & Reports**.
- Select the report for today's date and session time. The Session Details window will open, displaying the student's score and the target they selected in each activity.



- To view or print a full report, select **View Report**.

## Support for Your Tobii Dynamox Device

### Get Help Online

See the product-specific Support page for your Tobii Dynamox device. It contains up-to-date information about issues and tips & tricks related to the product. Find our Support pages online at: [www.TobiiDynamox.com](http://www.TobiiDynamox.com) or [www.myTobiiDynamox.com](http://www.myTobiiDynamox.com).

### Contact Your Sales Representative or Reseller

For questions or problems with your product, contact your Tobii Dynamox sales representative or authorized reseller for assistance. They are most familiar with your personal setup and can best help you with tips and product training. For contact details, visit [www.TobiiDynamox.com/contact](http://www.TobiiDynamox.com/contact)